

# License Manager Install and Configuration

## **Install Network License Manager**

- Perform default install
- Found under Tools and Utilities from the front page of the installer
- Only one install per server

## **Obtain license file**

- NLA
- [WWW.AUTODESK.COM/REGISTER](http://WWW.AUTODESK.COM/REGISTER)
- Manual

## **Combine license file (if multiple products)**

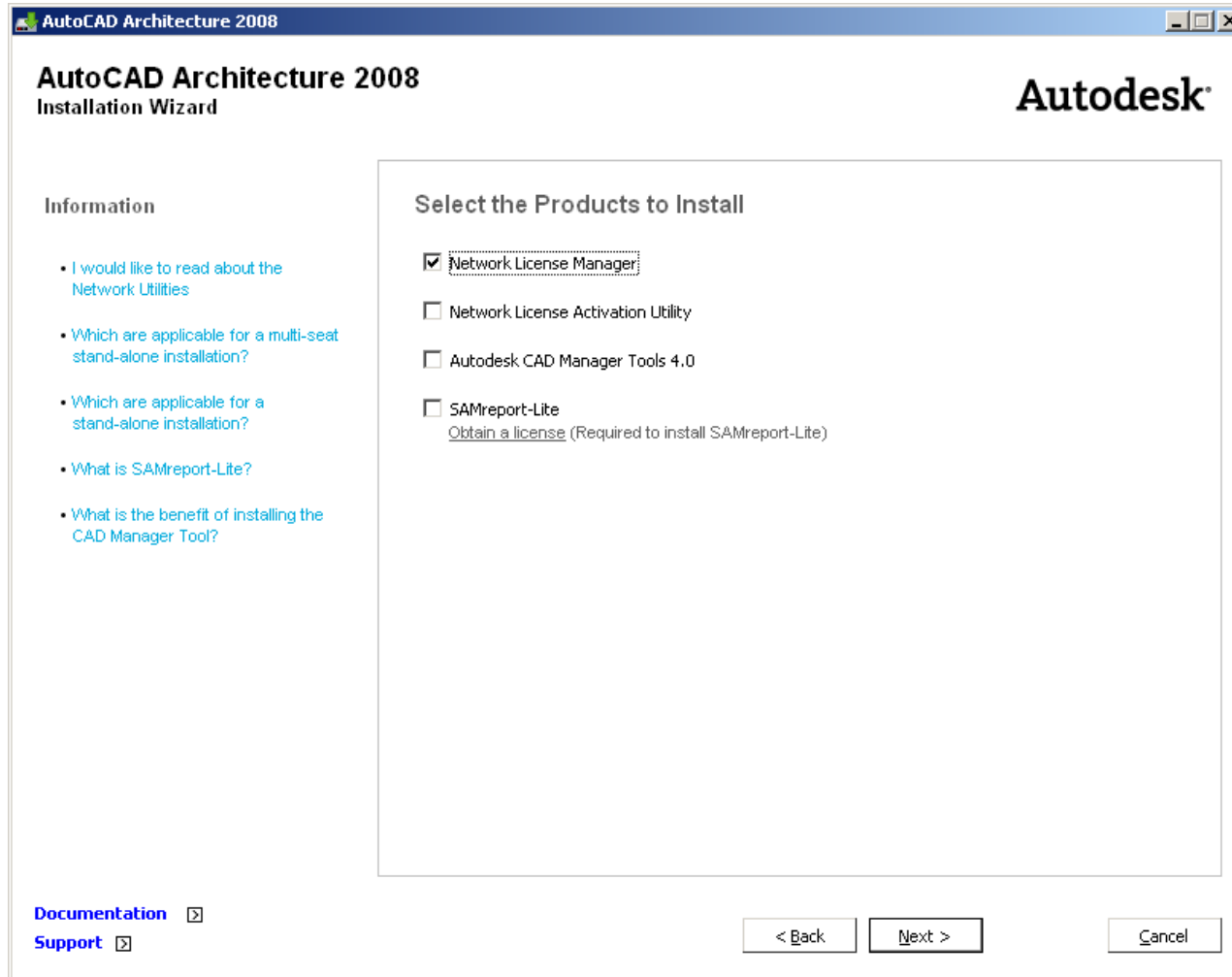
- NLA will automate license file combination

## **Configure license manager**

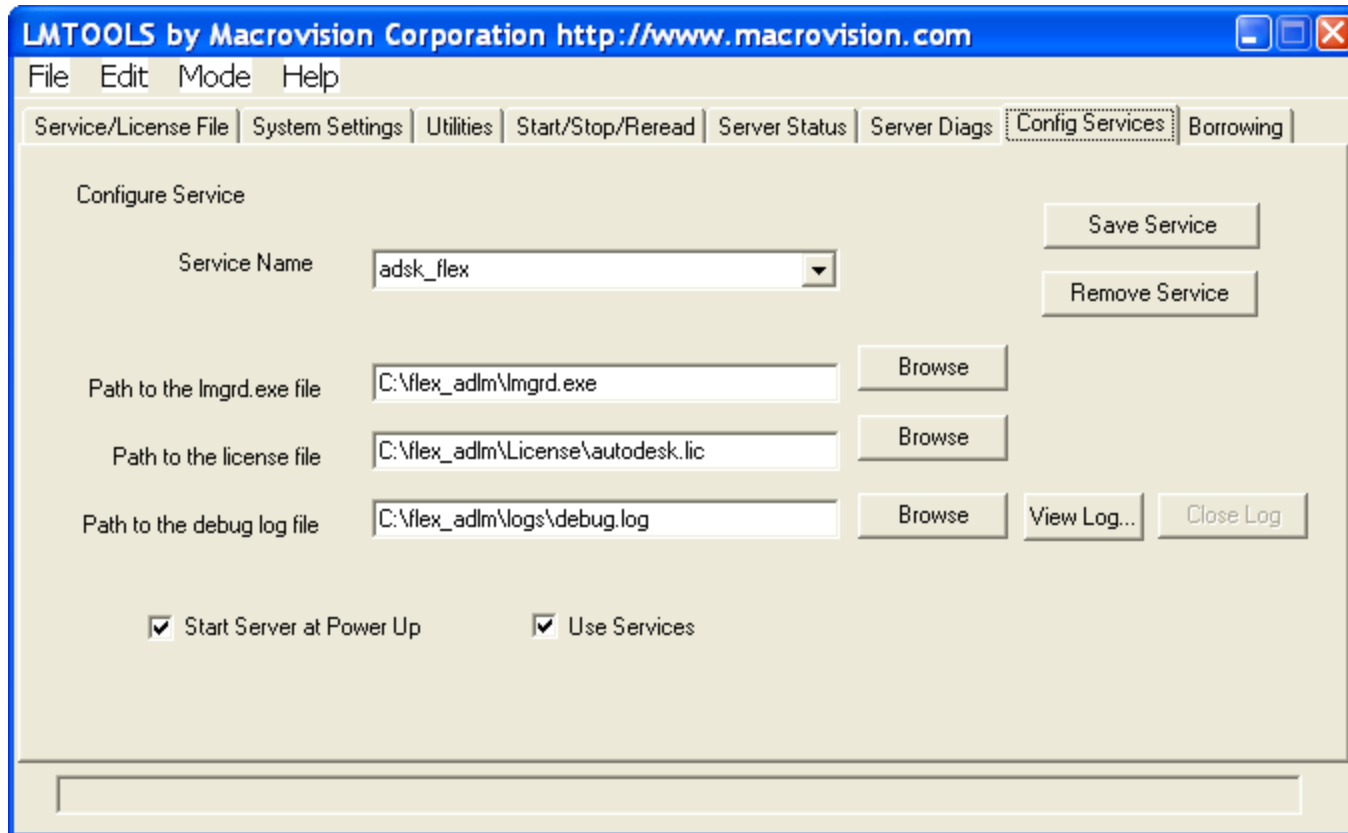
## **Start license manager**

## **Verify status**

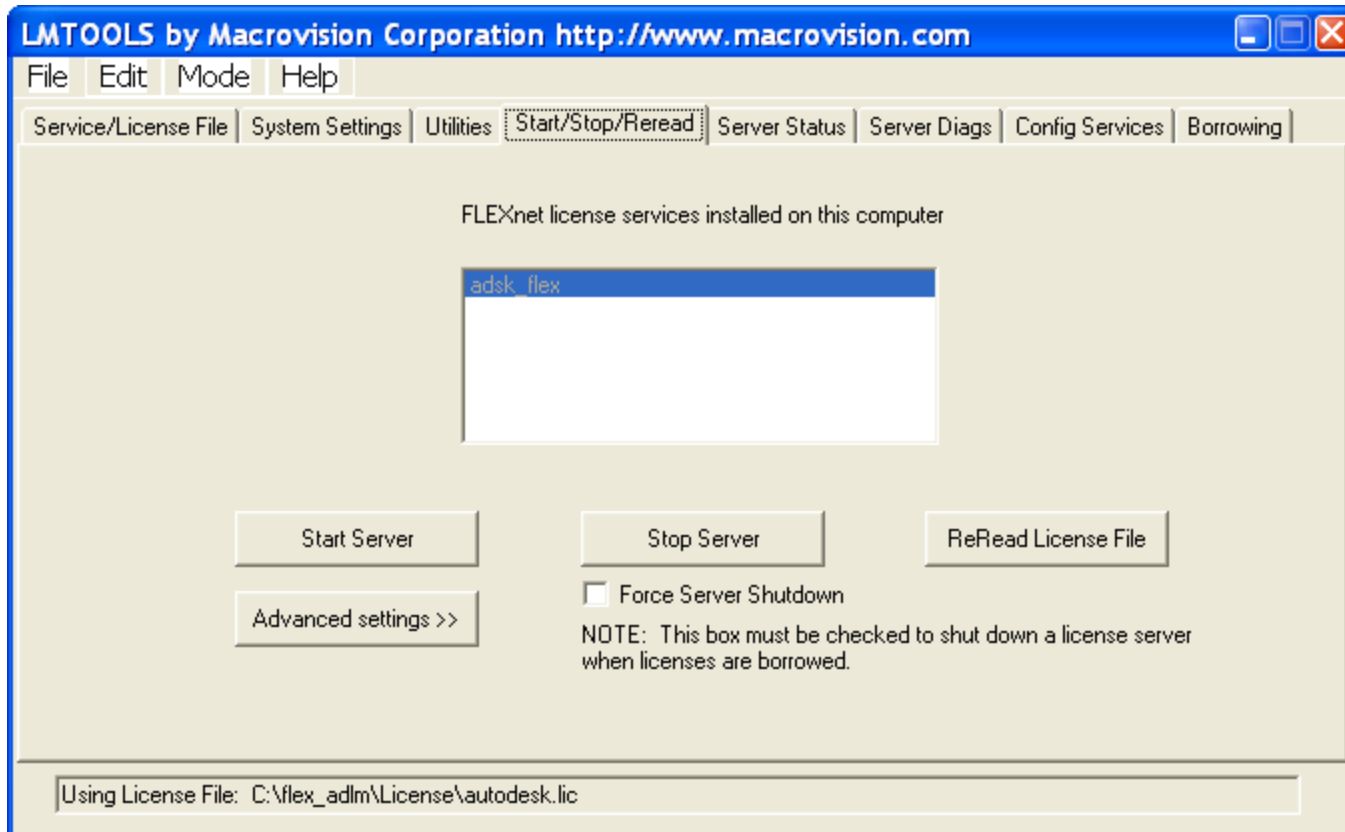
# Install the License Manager



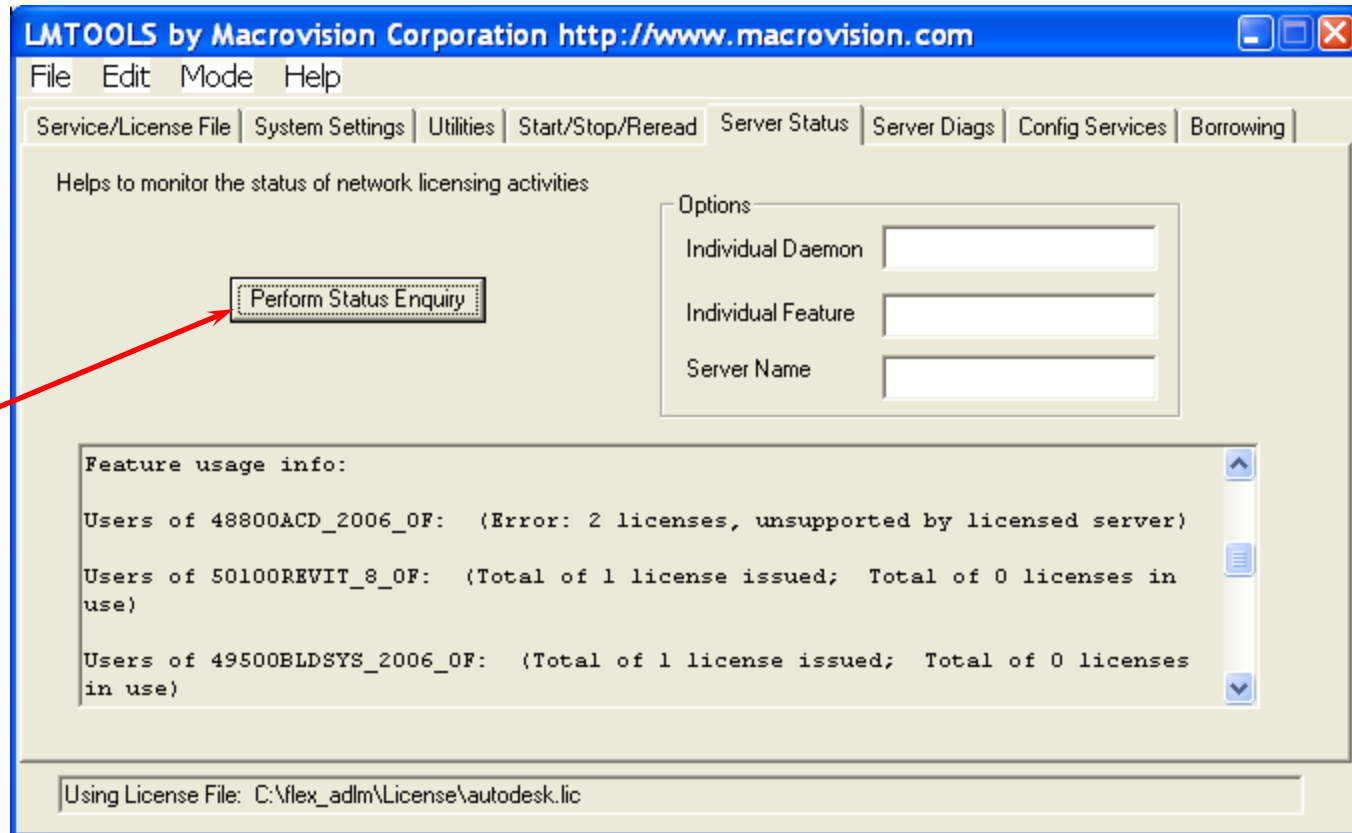
# Configure the License Manager



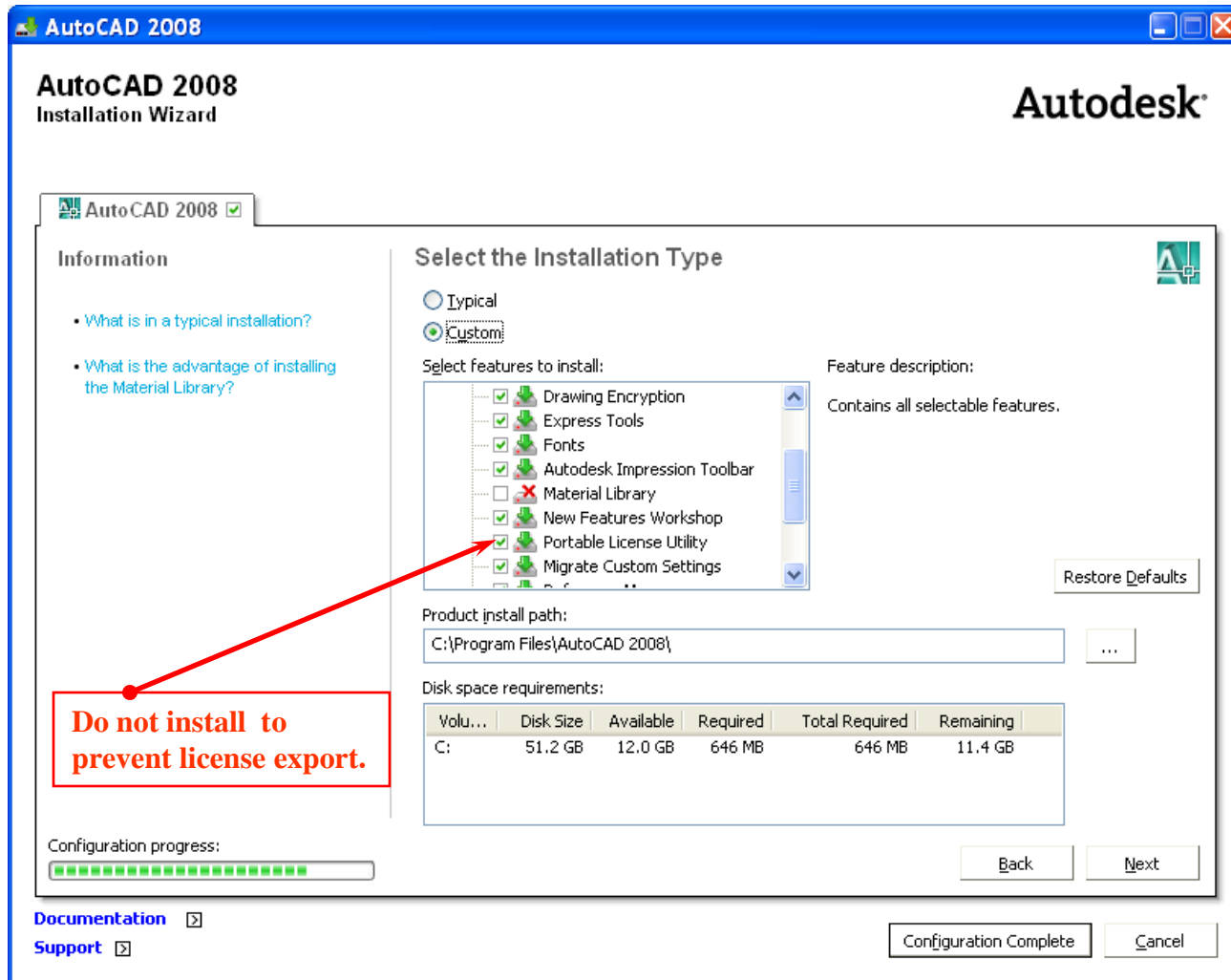
# Start the License Manager



# License Manager Status



# Portable License Utility (MSSA)



# License Manager Configuration

- Consult the Network Administrator's Guide (NAG) on creating an "Options File"
- An Options file can drive the license manager behavior including:
  - Idle session timeout
  - Maximum borrow period
    - 6 months or less
  - Who can borrow a license
- The Options file is extensively documented in the FLEXlm documentation located in the Docs\FlexUser folder under the folder where you installed the license manager.
  - The index page file name is TOC.HTM
  - Great reference and study material for advanced administrators

# Sample Options File

- # This is a comment
- #set all adsk products with timeout value of 5400 seconds
- TIMEOUTALL 5400
  
- #By default FLEXlm treats user names case sensitive
- #The following line causes FLEXlm to ignore user name case
- GROUPCASEINSENSITIVE ON
  
- #Create a group of users allowed to borrow Acad 2008
- #Only member of the group is a user named "noone"
- GROUP Acad8 noone
  
- #Only group Acad8 can borrow AutoCAD 2008
- INCLUDE\_BORROW 54600ACD\_2008\_0P GROUP Acad8

# Remember

- Register your products prior to allowing students to run them
- Always use the same logon name and password to register products
- To install products, apply service packs and perform license management tasks Administrative Privileges are required
- Please test EVERYTHING before opening the lab doors to your students!