

RONALD A. WILLIAMS, LTD.

8100 Three Chopt Road Suite 134 • Richmond, VA 23229

Phone: (804) 282-8239 • Fax: (804) 282-4087

E-Mail: mark.watson@rawledu.com • Web-Site: www.rawledu.com

Subject: Autodesk Design Academy 5.0 Network Installation Guide

Content:

This document is broken down into steps outlining how to get your Autodesk Design Academy (ADA) software up and running in a networked classroom environment. You should read through this documentation in its entirety prior to starting. Installation of the ADA software should be performed in the following order:

- Step 1. Ensure your systems meet the Minimum System Requirements
- Step 2. Install and configure the Autodesk Network License Manager (ADLM)
- Step 3. Install the Autodesk Deployment Wizard
- Step 4. Create a folder on the Microsoft Server/Teacher workstation
- Step 5. Create the Installation Image using the Deployment Wizard
- Step 6. Copy CD contents to share drive for non-AutoCAD Based Products
- Step 7. Run Installation on Client Computers
- Step 8. Configure Non-AutoCAD Based Products

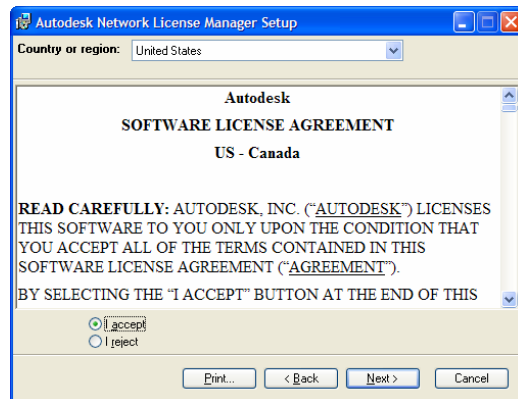
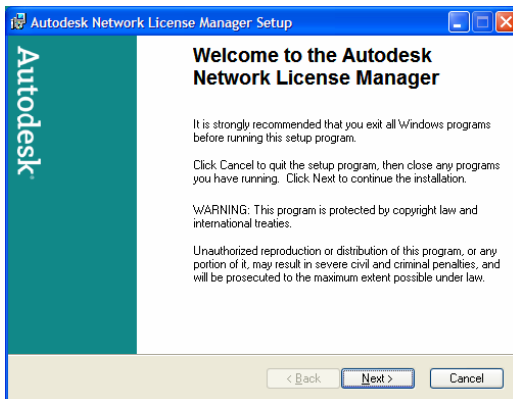
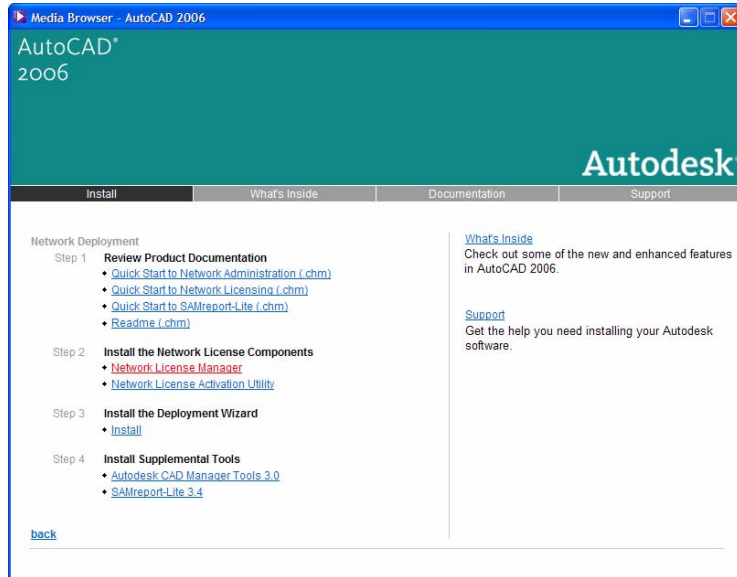
Ensure your systems meet the Minimum System Requirements outlined below, including Service Packs available from Microsoft.

Minimum System Requirements:

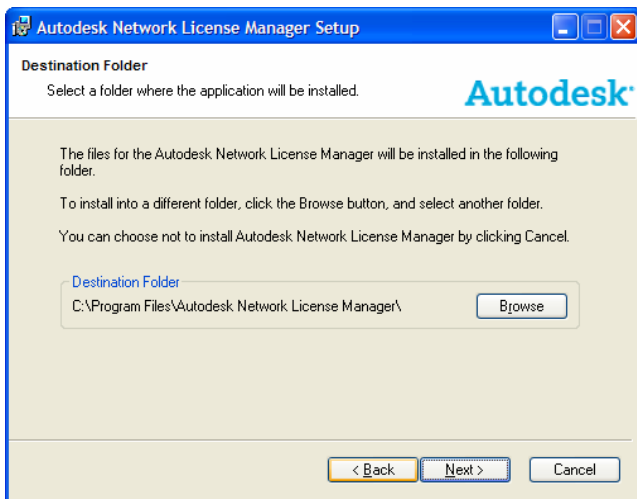
- Intel Pentium 4 1.8Ghz or better processor
- 256 MB RAM or higher
- 3 GB or more Free Disk Space
- 32 MB or more OpenGL compatible graphics card
- Microsoft Windows 2000 Professional (with Service Pack 4 or higher), or Windows XP Professional (with Service Pack 1)
- Microsoft Internet Explorer 6.0 (with Service Pack 1 or higher)
- Administrative rights to install/configure software
- Client for Microsoft Networks (Networking Component)
- File and Printer Sharing (Teacher Station Only) or a Network Drive with 3GB Free Space
- Local Area Network Connection

Install and configure the Autodesk Network License Manager (ADLM)

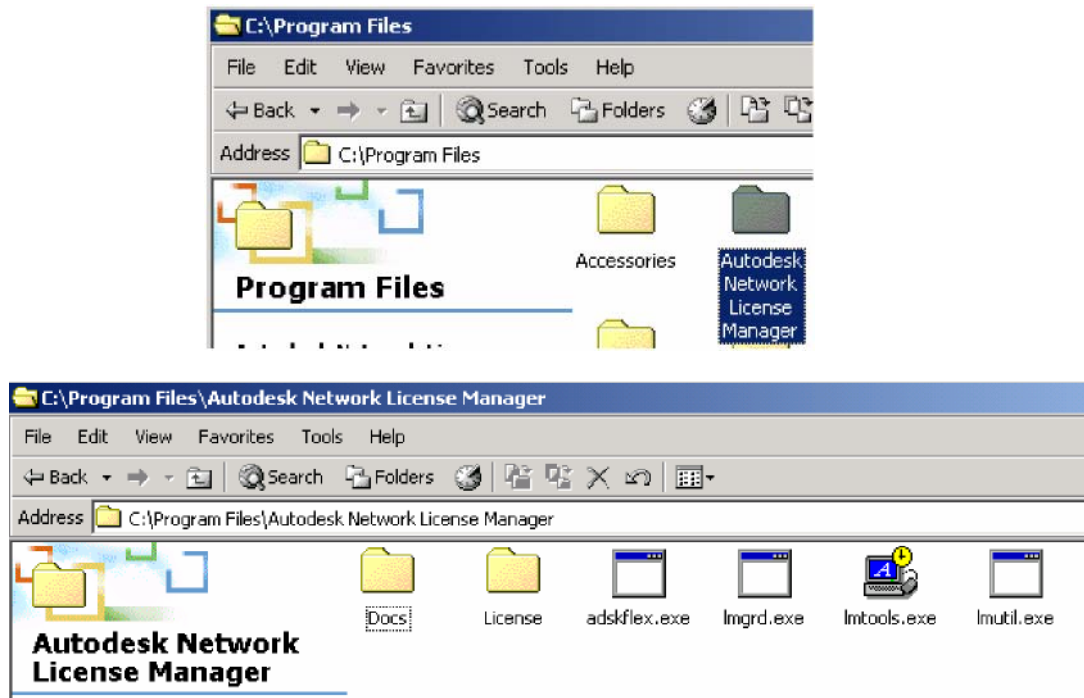
1. After logging on locally with Administrative rights to the Teacher Workstation or Server where you plan on installing the ADLM, use your software installation CD and select the **Network Deployment** category on the opening installation screen.
 - a. Select **Install the Network License Manager**. Read and proceed to the next screen, **Welcome to the Autodesk Network License Manager** then read and accept the **Software License Agreement**.



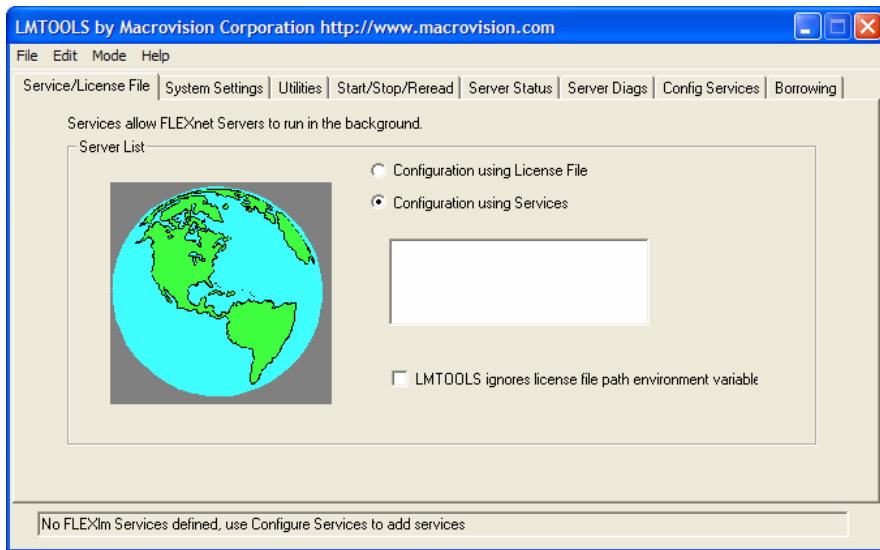
- b. Install the **Autodesk Network License Manager** in the default folder. Accept the remaining defaults and **Finish**.



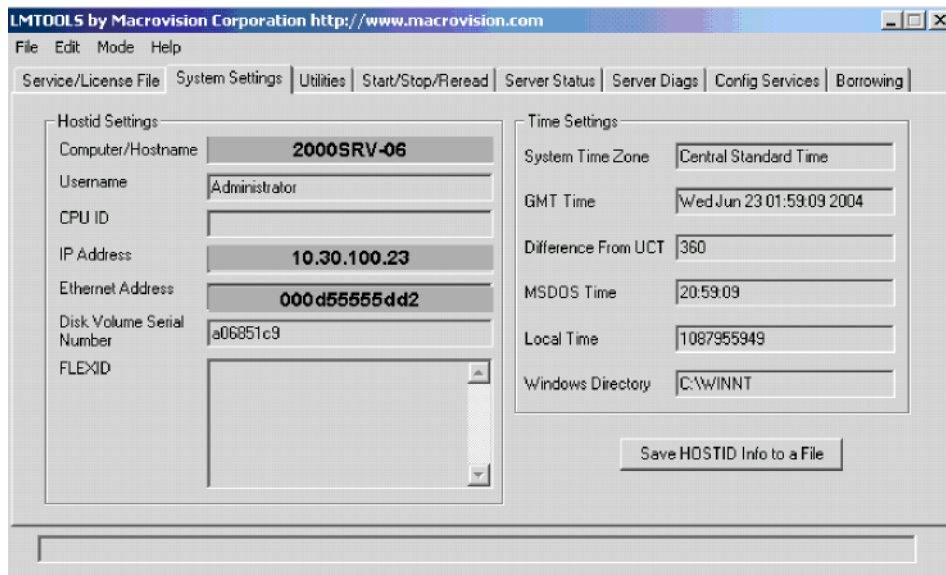
- c. Verify the default location of the **Autodesk Network License Manager** and its contents.



2. After the **Network License Manager** is installed, you need to configure the license server and obtain a license file. Launch **LMTOOLS**. Go to **Start>Programs>Autodesk>Network License Manager>LMTOOLS**. This is the **LMTOOLS** opening screen. Notice, when you first launch **LMTOOLS**, no Service is setup. (See line at bottom of screen). **Select** "Configuration using Services."



On the **System Settings** tab, write down the Computer/Hostname, and the Ethernet Address.



Have your serial number(s) available and call Autodesk's Authorization Department at 800-551-1490 or 415-507-4690 or Fax Autodesk's Authorization Department at 800-225-6490 or 415-507-4937 to obtain your license file. (Note: your Windows Directory may be different for Windows 2000 Server or Windows Server 2003.) If you call the Authorization Department, you will receive a license file via your e-mail address. Keep a copy of this file!

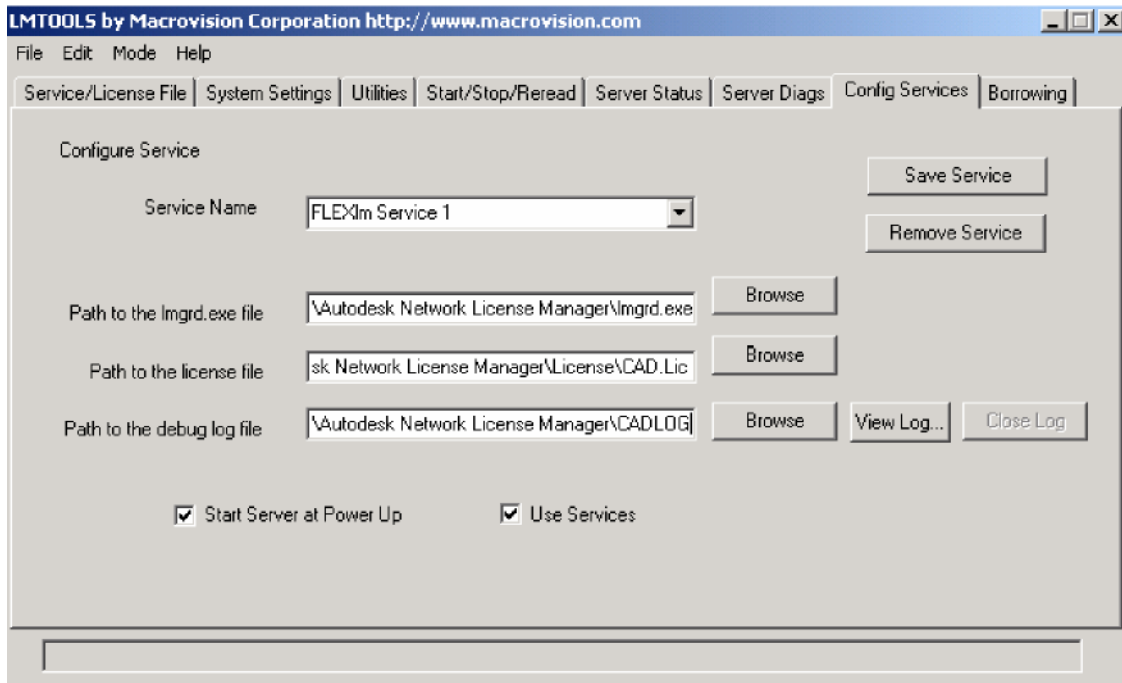
Below is an example of a license file for AutoCAD 2005. *You can append other Autodesk software product licenses to this license file using Notepad!* This is done so you only have ONE license file for multiple software products.

```

SERVER 2000SRV.06 000ddse5hFBF
USE_SERVER
VENDOR adskflex port=2080
INCREMENT 46300ACD_2005_OF adskflex 1.000 permanent 25 \
VENDOR_STRING=nfr:permanent BORROW=720 SUPERSEDE DUP_GROUP=UH \
ISSUED=14-Apr-2004 SN=XXX-XXXXXXXXX SIGN="08EF 5126 9905 5CD2 \
3C5B 619E 50AA CB4C 7E83 B88F 4394 14DD 17AA C6A0 4F31 0B21 \
9E0D B4DC 6ECA 35A4 9CD3 DA02 5380 687E 296C 3AF6 75A1 3187 \
2EBC C579" SIGN2="1707 047D F86F 234C C47D 8248 2932 E5C1 4A19 \
CAAF D619 E3B9 73FD 0C77 2EFC 0464 FB02 2757 6045 A100 EFCC \
1232 8501 111E 63EA F6A8 5980 1A18 5E34 0CDF"

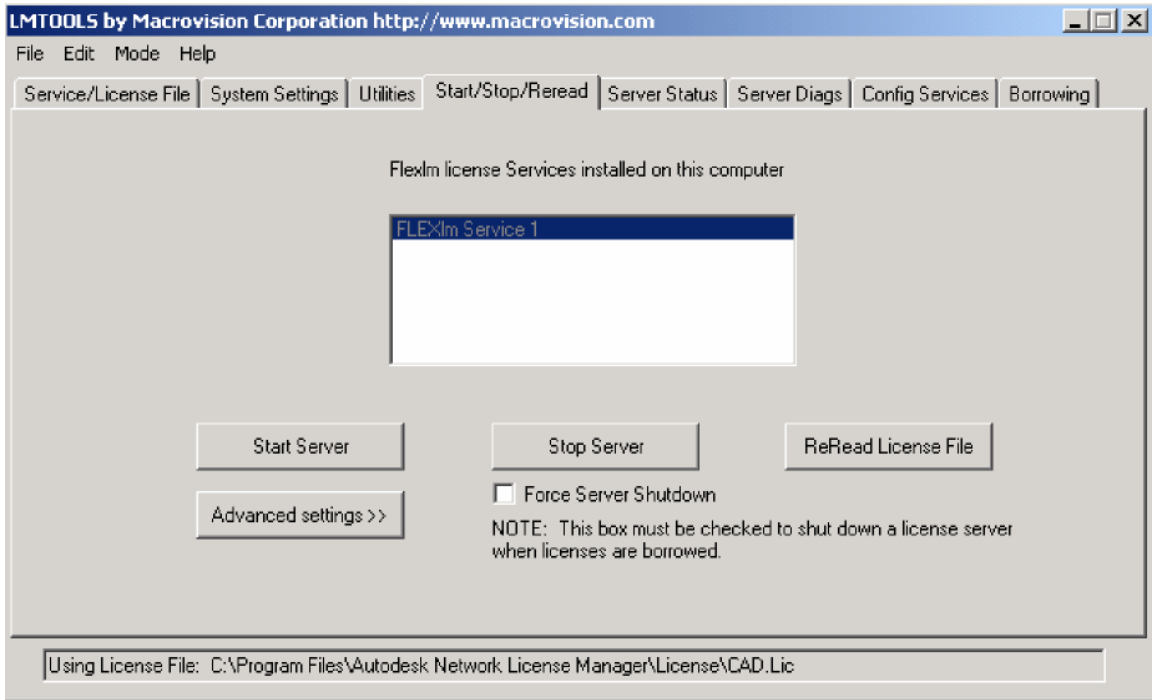
```

3. Download/Copy the license file you received from Autodesk to the "C:\Program Files\Autodesk Network License Manager\License" folder. Once the file is copied to the folder confirm the file ends with a ".LIC" Extension.
4. Create an Empty text file named "DEBUG.LOG" in the License folder referenced above.
5. On the **Config Services** tab, type FLEXIm Service 1 as the **Service Name**. Click the browse buttons to fill in the Path information. (Note: make sure the license file and debug file are already present) For this example, a license file named CAD.Lic was used. Also, set the **Path to the lmgrd.exe file** and a **Path to the debug log file**.
6. Make sure to the check **Start Server at Power Up** and **Use Services** boxes.

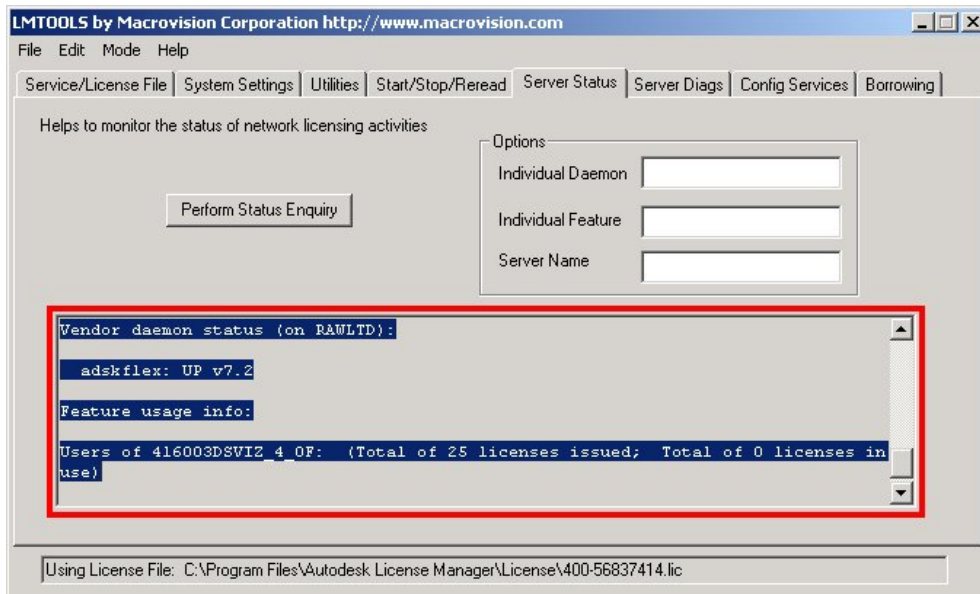


7. On the **Config Services** tab verify your paths and settings. Select the **Save Service** button. **Save** the service as FLEXIm Service 1.
8. On the **Start/Stop/Reread** tab, at the bottom of the dialog box verify to see if the service is using the <YOUR license file name>.LIC you specified. The LIC file is a

standard text file that can be viewed/modified using Notepad. Click the **Start Server** button to start the server.



9. On the **Server Status** tab Click to “Perform Status Enquiry.” Your status should look similar to what is displayed below. If you do not see the section relating to “Total of # licenses Issued” you may need to Stop the Server Service, and Start it again.



10. That's it! Exit the LMTTOOLS Dialog.

Install the Deployment Wizard

Using your software installation CD, select the **Network Deployment** category in the opening installation screen. Select **Install** from the **Install the Deployment Wizard**.

Read and Agree to the License Agreement. Accept default folder location and finish the installation with the defaults.

You are installing this software so you can create a network deployment image of the desired software product. The deployment wizard will guide you through the process of creating the deployment image.

Create a folder on the Microsoft Server/Teacher workstation:

Create a folder on the Server/Teacher workstation where the installation images will be placed. It's best to start with a Root directory of Autodesk, and then create a sub-directory for each of the other products (example: MCAD2006, ACAD2006, ADT2006, INVENTOR10, Civil2006, LDT2006, REVIT8, VIZ2006, and DWFCOMP2). If the Autodesk directory is created on the Teacher Workstation it will need to be shared so all of the computers in the lab have Full Access. (Note: Images cannot be created for Autodesk Revit and Autodesk DWF Composer. It is recommended that you copy the contents of each of these CD's into their respective folders and run the installation manually)

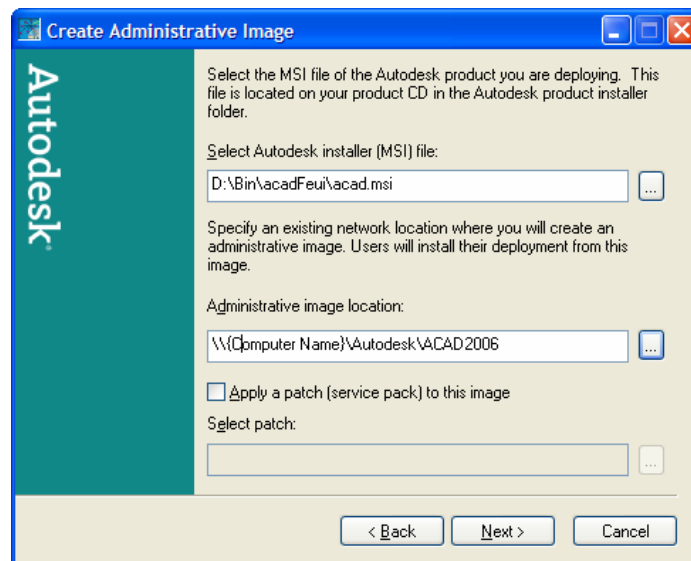
Create the Installation Image using the NIW Software:

1. Click **Start>Programs>Autodesk>Deployment Wizard** to launch the **Autodesk Deployment Wizard**.
2. Select the **Create an administrative image** radio button.



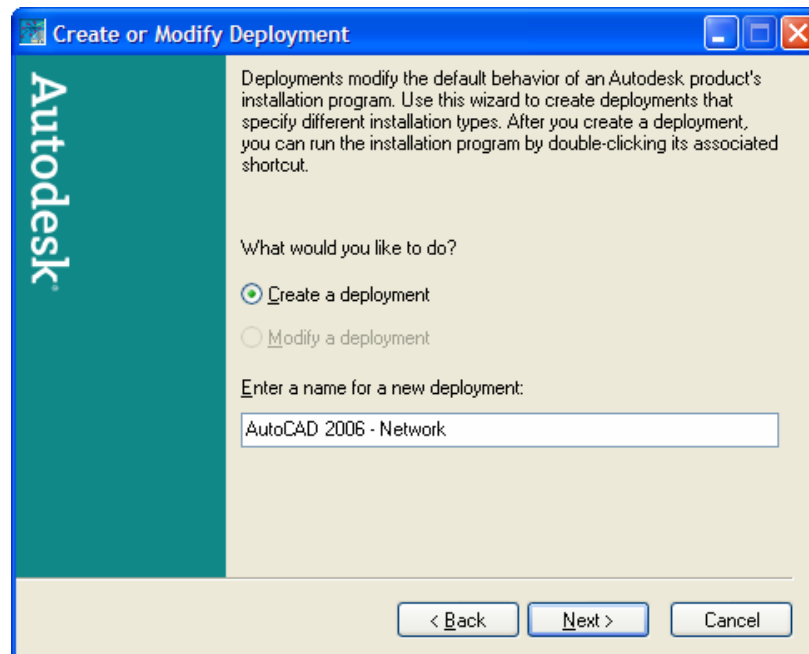
3. Click **Next**.

4. Select the acad,msi file from your software installation CD and the deployment image from the shared folder you created earlier on your server.



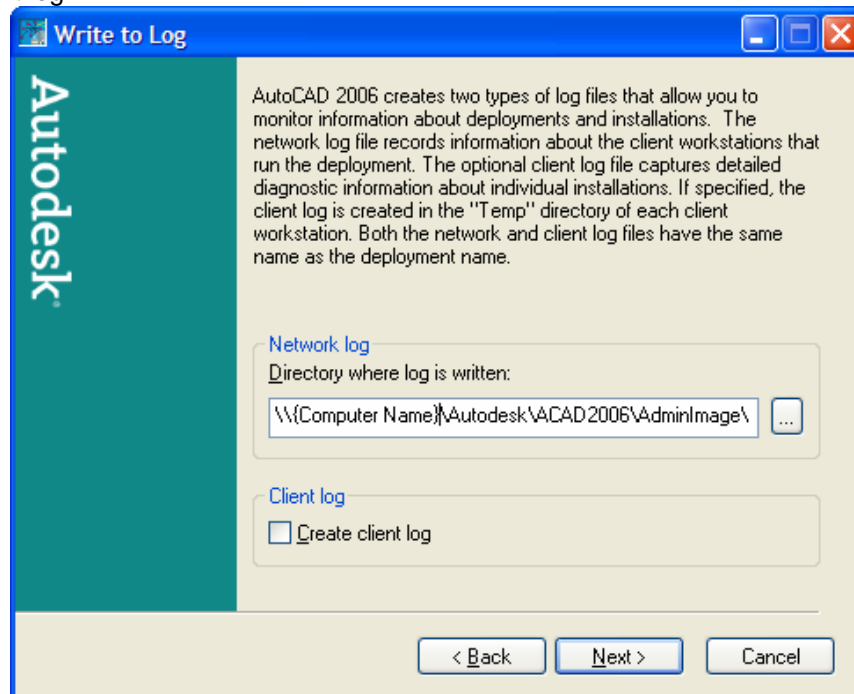
5. Click **Next**

6. Enter a *unique* name for your **deployment image**.
This will be the shortcut name that you will select when you deploy the software image to the classroom computers.

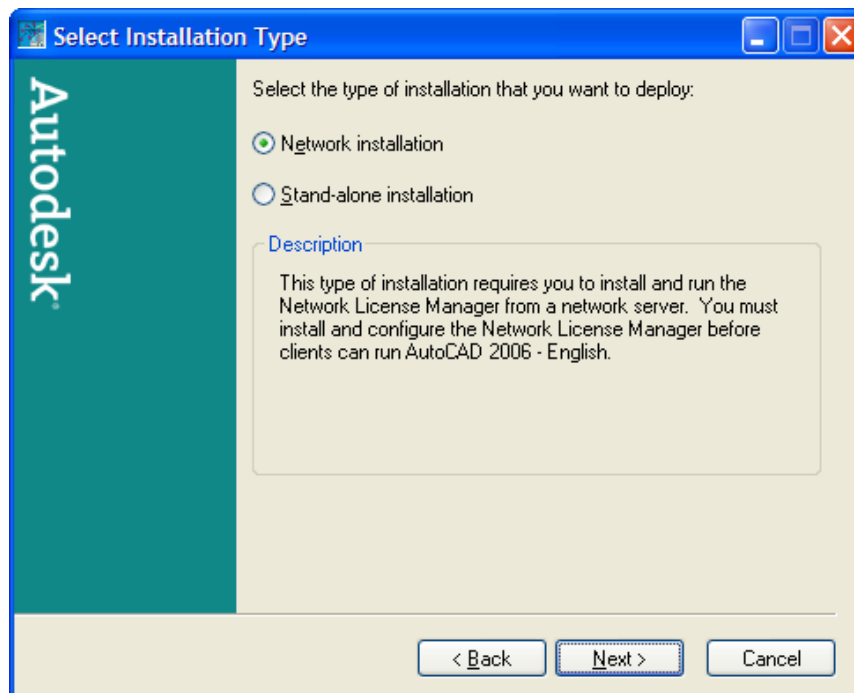


7. Click **Next**

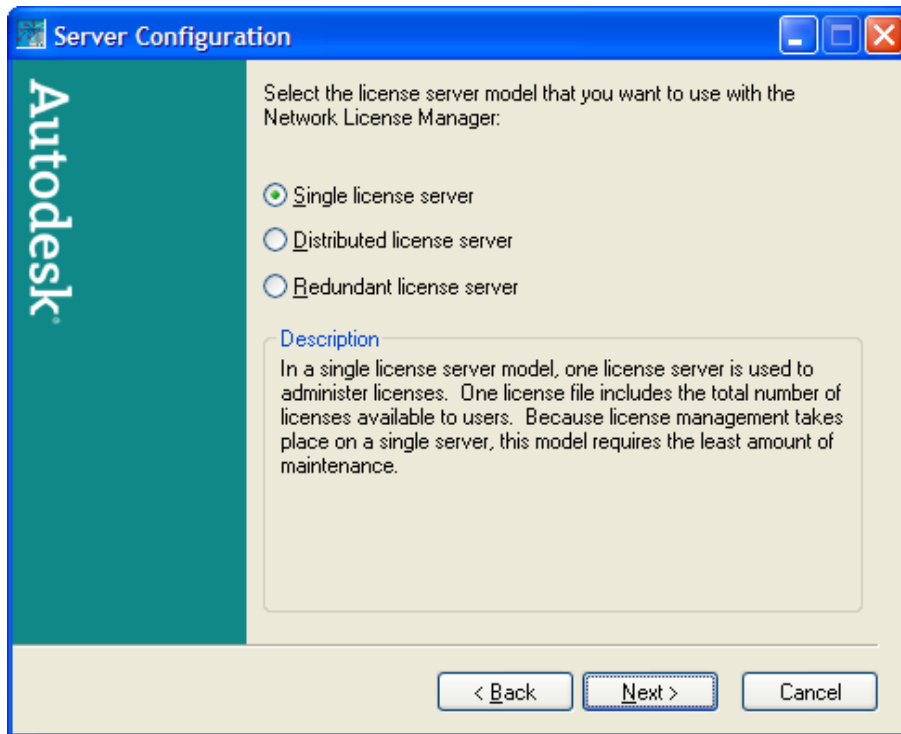
8. Use a deployment log folder location. Optional: You may or may not want to create a client log.



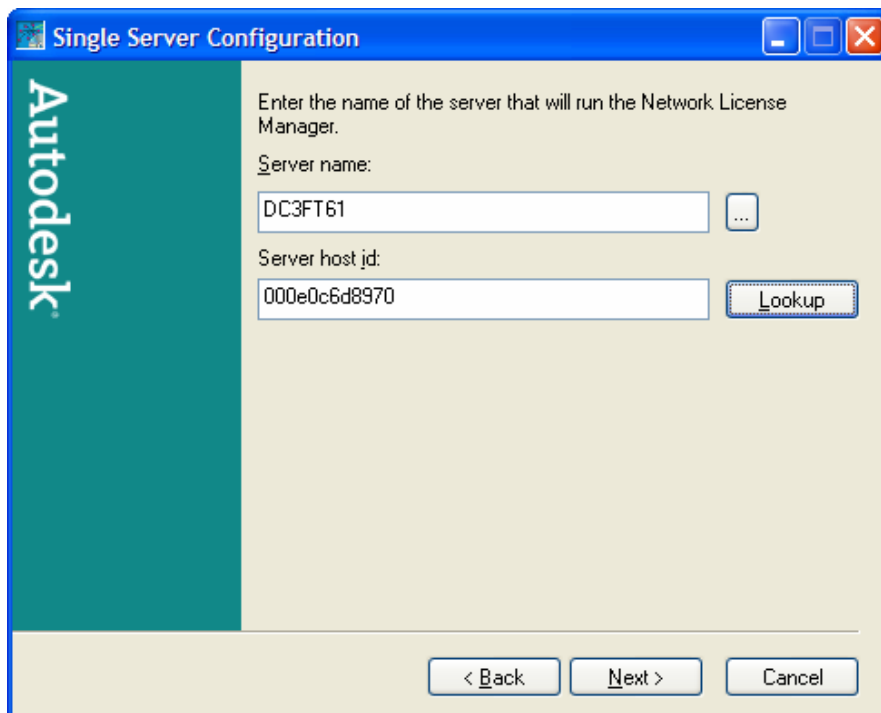
9. Click Next
10. Select the **Network Installation** radio button



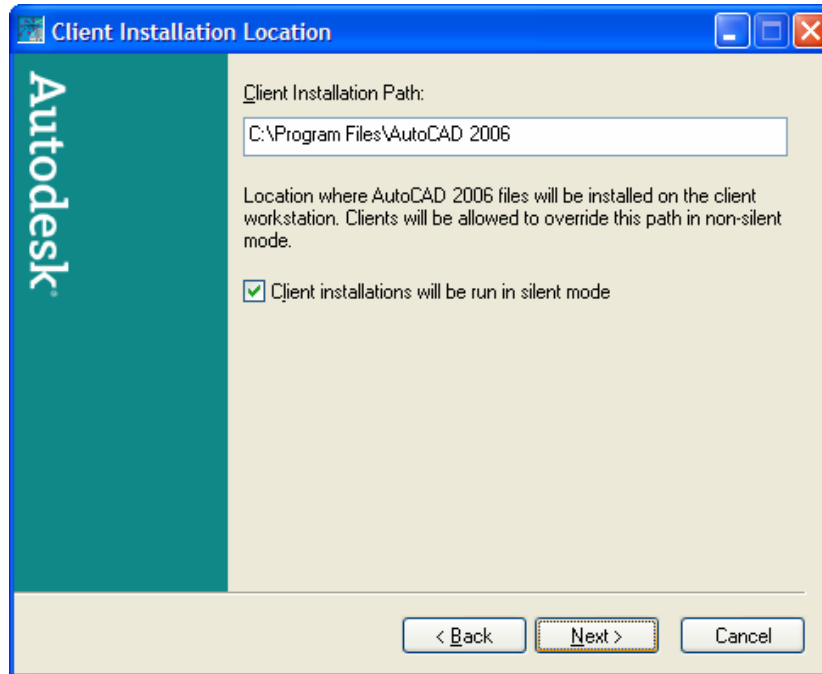
11. Select the **Single License server** radio button. (Almost ALL schools use this configuration.)



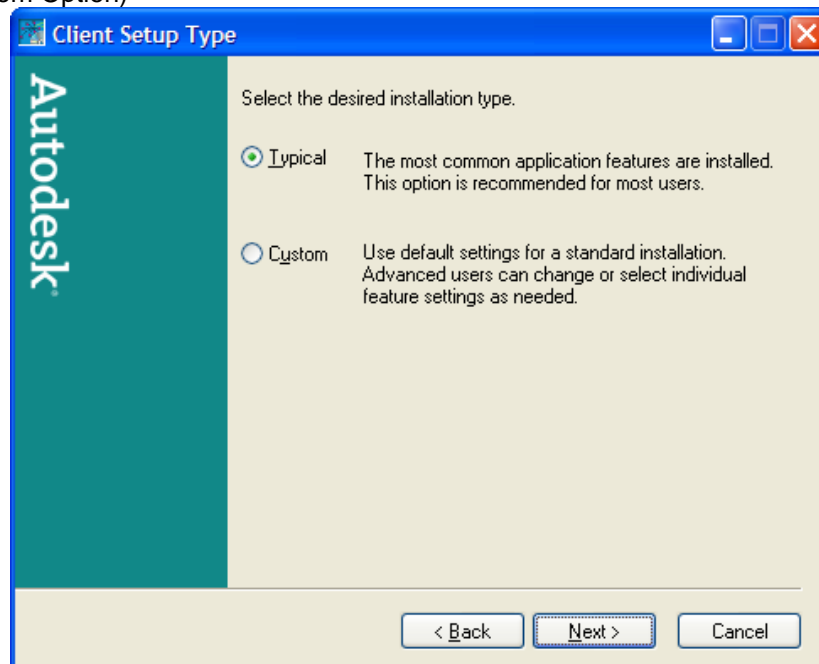
12. Select the server name that your license resides on and use the **Lookup** button for the **Server host id** name.



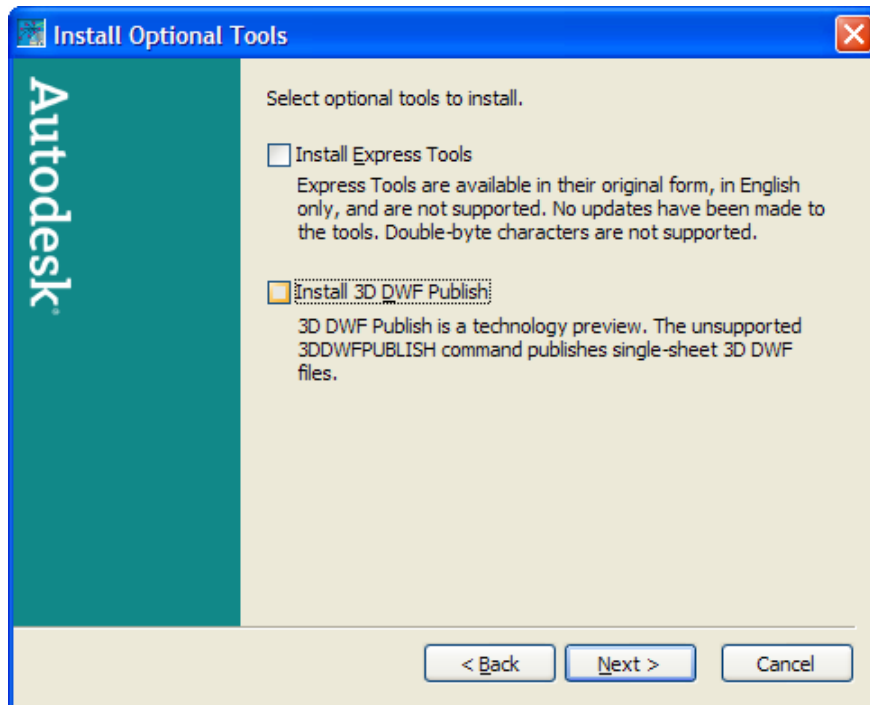
13. Select the drive and folder location on your classroom computer to which the client will be installed. (Client Installation Path for example: the default location for your AutoCAD 2006 software is C:\Program Files\AutoCAD 2006. This will not likely be changed).



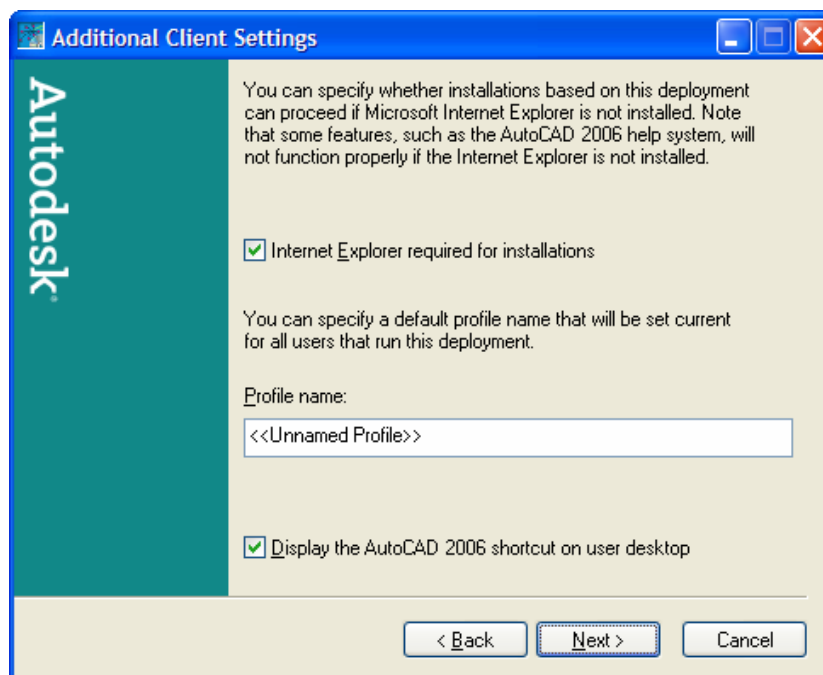
14. Select the **Typical** radio button. Select the features you want. (Note: some schools are turning off Drawing Encryption. Drawing Encryption is used for password protecting your drawing files or attaching a Digital Signature to your drawing files. To do this use the Custom Option)



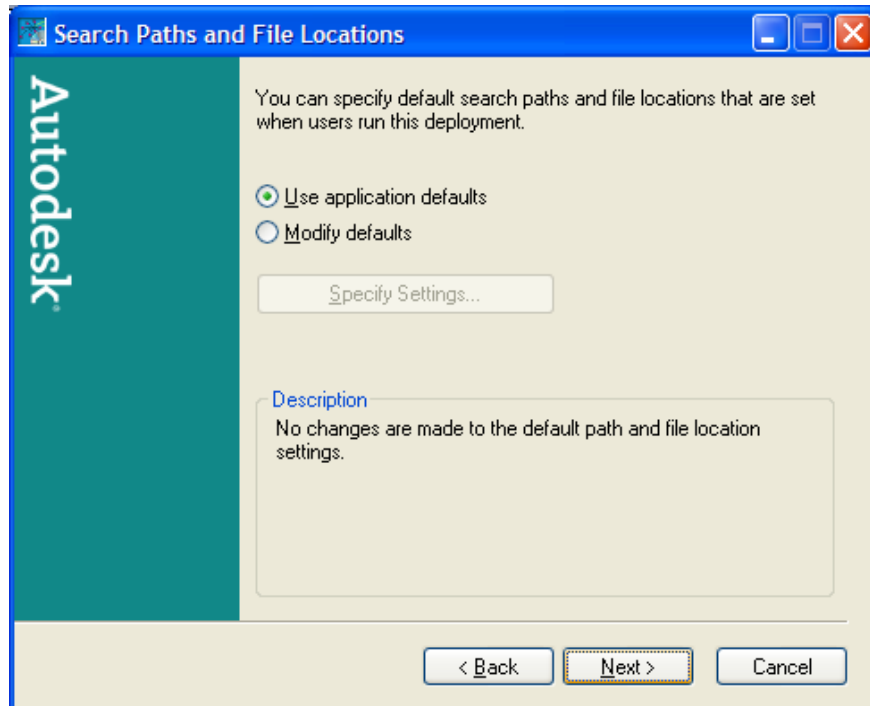
15. You now have the choice to install Express Tools and 3D DWF Publisher. If you plan on installing the Autodesk DWF Composer, be sure to uncheck the 3D DWF Publisher option.



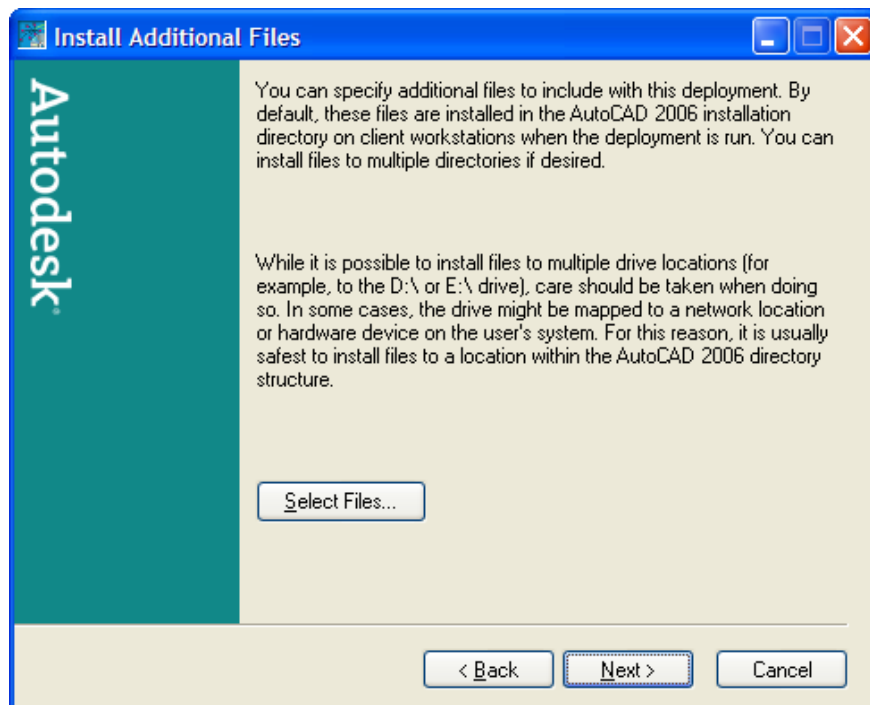
16. You now have the choice to require Internet Explorer to be installed prior to AutoCAD Installing. If your systems are running Internet Explorer 6 with Service Pack 1 you can uncheck the option to require Internet Explorer. Otherwise leave it and Internet Explorer will be updated during the installation.



17. Define Search Paths and File Locations will customize AutoCAD to look to certain locations (a network drive for example) for its configuration files. These settings will not likely be changed.



18. Install Additional Files allows the installation to deploy customized files for use with plotting, and CAD Standards. If you have not customized any files, you should not need to deploy them to the student workstations.



19. Enter your Serial Number

Serial Number

Autodesk

Enter your product serial number in the spaces below. You can find this information on the product packaging. The serial number must contain a three-digit prefix followed by an eight-digit number. This information is required for customer purchase authentication.

Serial Number:

-

< Back Next > Cancel

20. Enter your Personal Information. This information should match the Registration Information Supplied to Autodesk when the License File was obtained.

Personal Information

Autodesk

Enter the contact information for the individual who is responsible for your company's software licenses (typically, your CAD manager or IT manager). The information you enter here is permanent, and is displayed in the Help About box on every user's workstation. Because you cannot change this information later on, make sure you enter information here that is relevant to your users.

First Name:

Last Name:

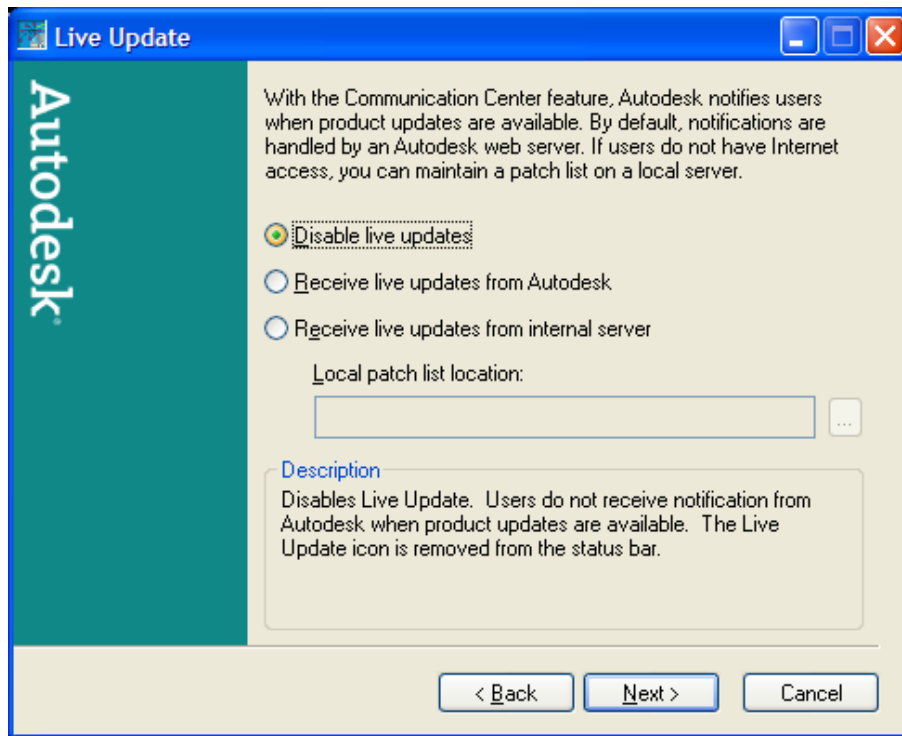
Organization:

Support Contact:

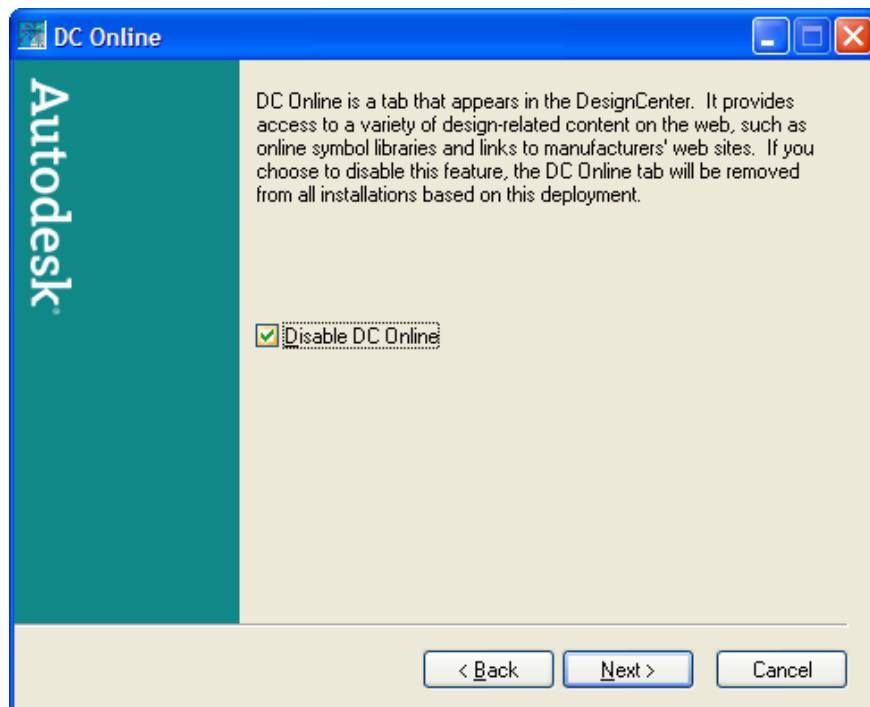
Support Number:

< Back Next > Cancel

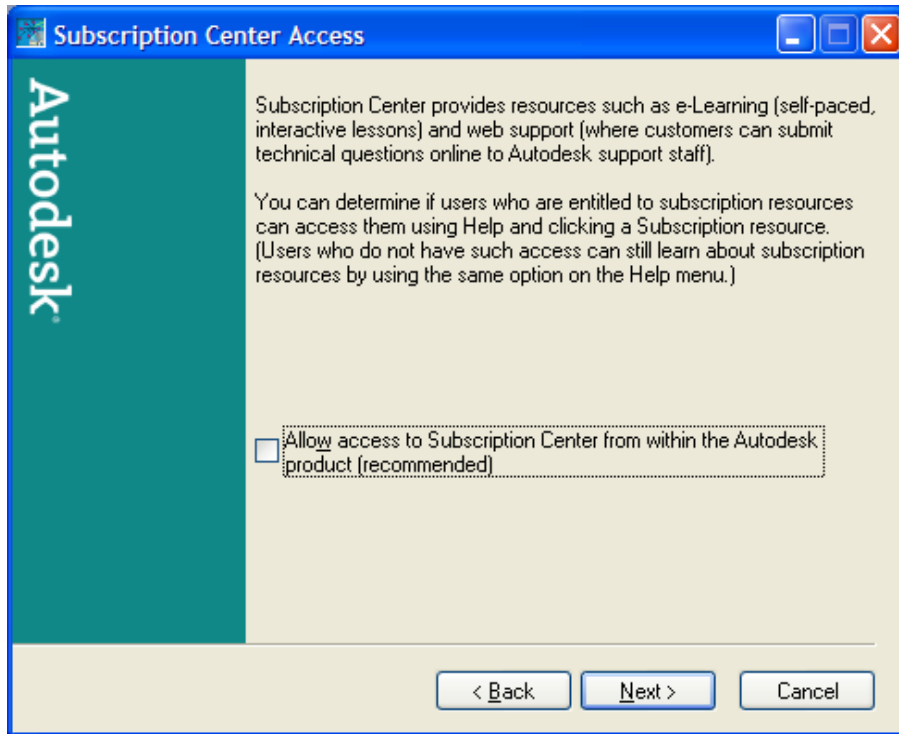
21. You now have the choice to receive or disable **Live Updates** as shown below. This enables the users to be notified when product updates are available. If the users are **NOT** going to be logging in with Administrative rights Disabling this feature is recommended.



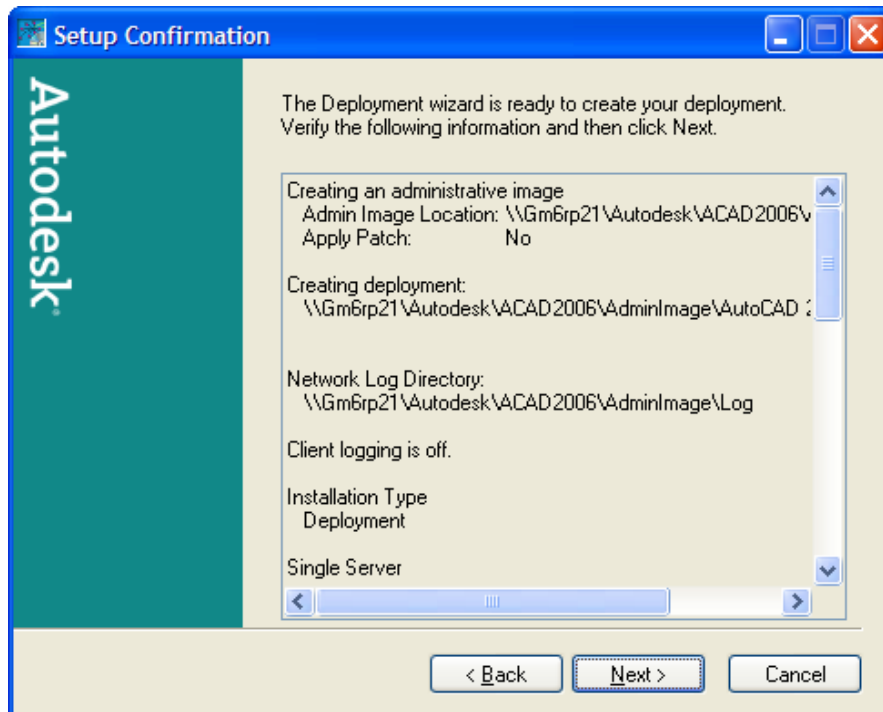
22. You now have the choice to receive or disable **DC Online** as shown below. Again, if the users are not going to have Administrative Rights Disabling this feature is recommended.



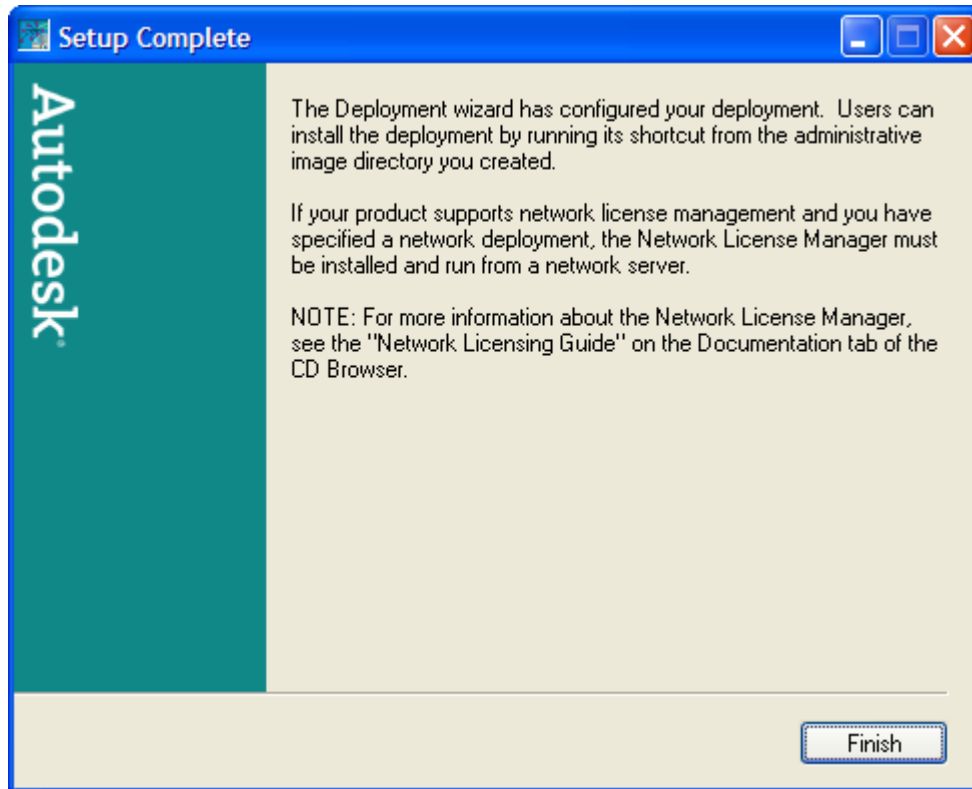
23. You now have the choice to receive access to Subscription Center as shown below. Again, if the users are not going to have Administrative Rights Disabling this feature is recommended.



24. Confirm your Deployment Installation Information.



25. Clicking **Next** starts the Image Creation Process.
26. Click **Finish** to complete the Image Creation Process.



Copy CD contents to share drive

Autodesk Revit

CD 2 of 2 - Copy the contents from “%CDROM%\Revit\Revit” into the directory created earlier. Run RevitInstall.exe to start the installation.

Autodesk DWF Composer

Copy the entire contents of the CD and run Setup.exe from the Shared Location

Run Installation on Client Computers:

Follow the installation sequence below for the products you are planning on installing:

- Autodesk Inventor Professional – Run \\Autodesk\Inventor10\{filename}
- AutoCAD Mechanical 2006 – Run \\Autodesk\MCAD2006\{filename}
- Autodesk VIZ 2006 – Run \\Autodesk\VIZ2006\{filename}
- Autodesk Architectural Desktop 2006 - Run \\Autodesk\ADT2006\{filename}
- Autodesk Civil 2006 – Run \\Autodesk\Civil2006\{filename}
- Autodesk Land Desktop 2006 - Run \\Autodesk\LDT2006\{filename}
- AutoCAD 2005 - Run \\Autodesk\ACAD2006\{filename}
- Autodesk Revit 6.1 – Run \\Revit8\RevitInstall.exe
- Autodesk DWF Composer – Run \\DWFCOMP2\Setup.exe installation

Configure Non-AutoCAD Based Products:

Autodesk Revit

The first time Autodesk Revit is started, you are prompted with the Product and License Information Dialog. Select the Network Option, and type in the name of the computer where the Autodesk Network License Manager is installed and running. This will configure Revit to search the network for its license.